

**1. Project Title:** Wasteland Change Analysis of NER

**2. Scope and Objectives:** The goal of the study is to map the changes occur in the wasteland areas during 2005-06 and 2009 and also to map the new wasteland areas developed during this period. The objectives of the project are -

- Update the wasteland vector layer of 2005-06 using three-season satellite data of 2008 – 09.
- Identify and depict areas with major wasteland change between 2005 – 06 and 2008 -09.
- Preparation of Wastelands category-wise spatial change statistics and summation in the form of report and atlas

**3. Centre:** North Eastern Space Applications Centre, Umiam, Meghalaya in collaboration with State Remote Sensing Applications Centre/State Space Applications Center of NER and few academic institutions.

**4. Funding Agency:** Ministry of Rural Development, Govt. of India & coordinated by NRSC, Hyderabad.

**5. Study Area:** Mapping done for Meghalaya and coordinated for entire NER.

**6. Brief Methodology :** Multi temporal orthorectified LISS- III data of kharif (Aug –Nov), rabi (Jan- Mar), zaid (April- May) seasons were visually interpreted to delineate the wasteland areas.

**7. Data Used:** Three seasons IRS P6 LISS III data of 2008-09.

**8. Status of the Project:** Completed

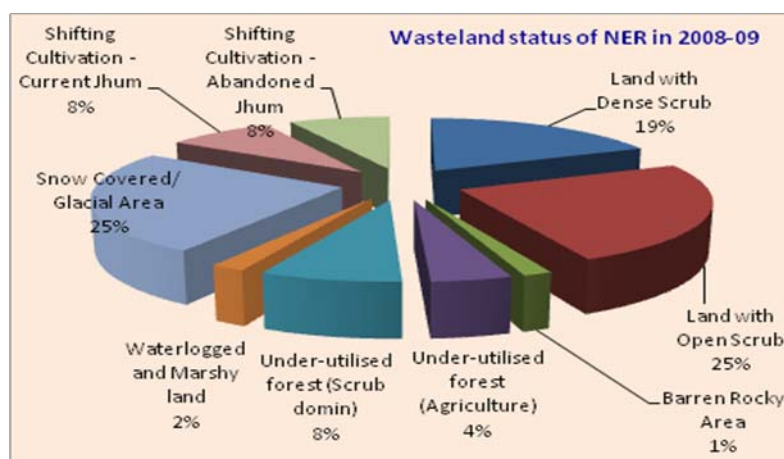


Fig.1. Wasteland status of NER in 2008-09

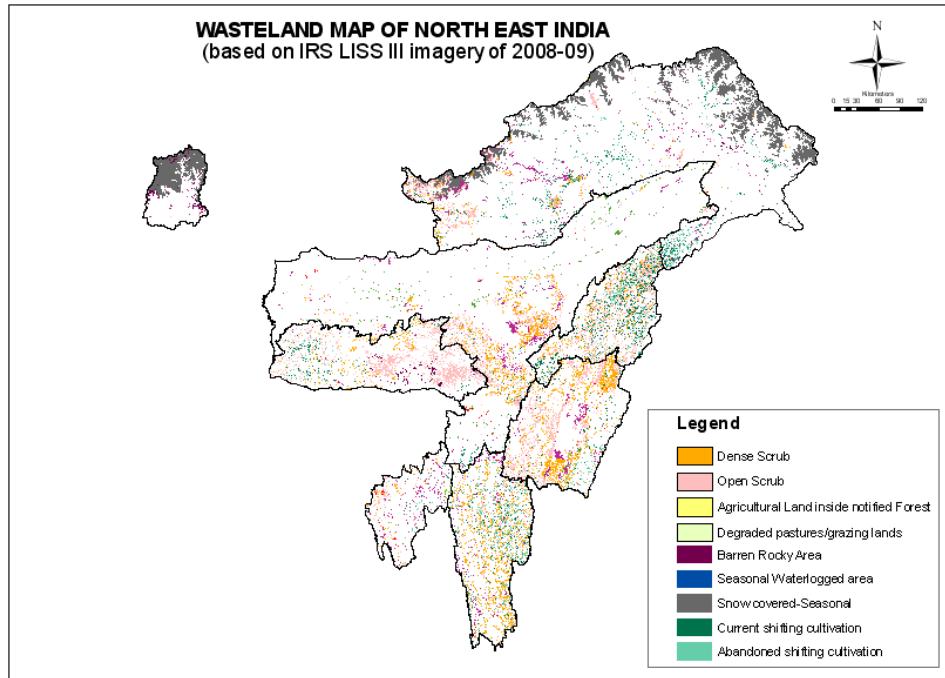


Fig. 2 Wasteland map (2008-09) of NER

**9. Utilization of the project output:** Output of the project is being used by different user departments of NER in preparing their detailed project report (DPR).

**10. Duration:** one year (2010)